



It's FREE!

KEEP CALM AND GO TO SI

**Study with
a group!**

Fall 2023 Courses with Study Group Sessions

BIOL 2010, BIOL 2230

BIOL 2010 (A & P I) - Cleveland

Leader: Kara Rhea

Monday 1:00-2:00

Wednesday 2:00-3:00

Location: Library 218

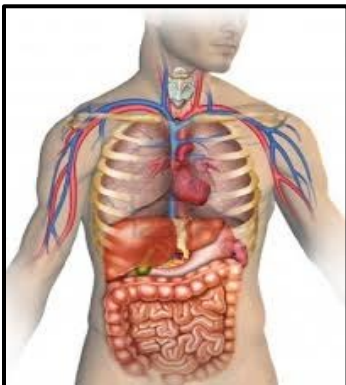
BIOL 1110 (Microbiology - Cleveland

Leader: Alix Singleton

Tuesday 12:30-1:30

Thursday 12:30-1:30

Location: Library 218



What are SI study group sessions? Supplemental instruction (SI) sessions are peer-led study group sessions for selected courses. The sessions are facilitated by a trained SI leader, a student who has previously taken the class and earned a high grade. The leader does not re-lecture or give out his/her class notes but helps students become independent learners by planning activities that encourage students to work together and process material themselves. (Source: University of Missouri-Kansas City)